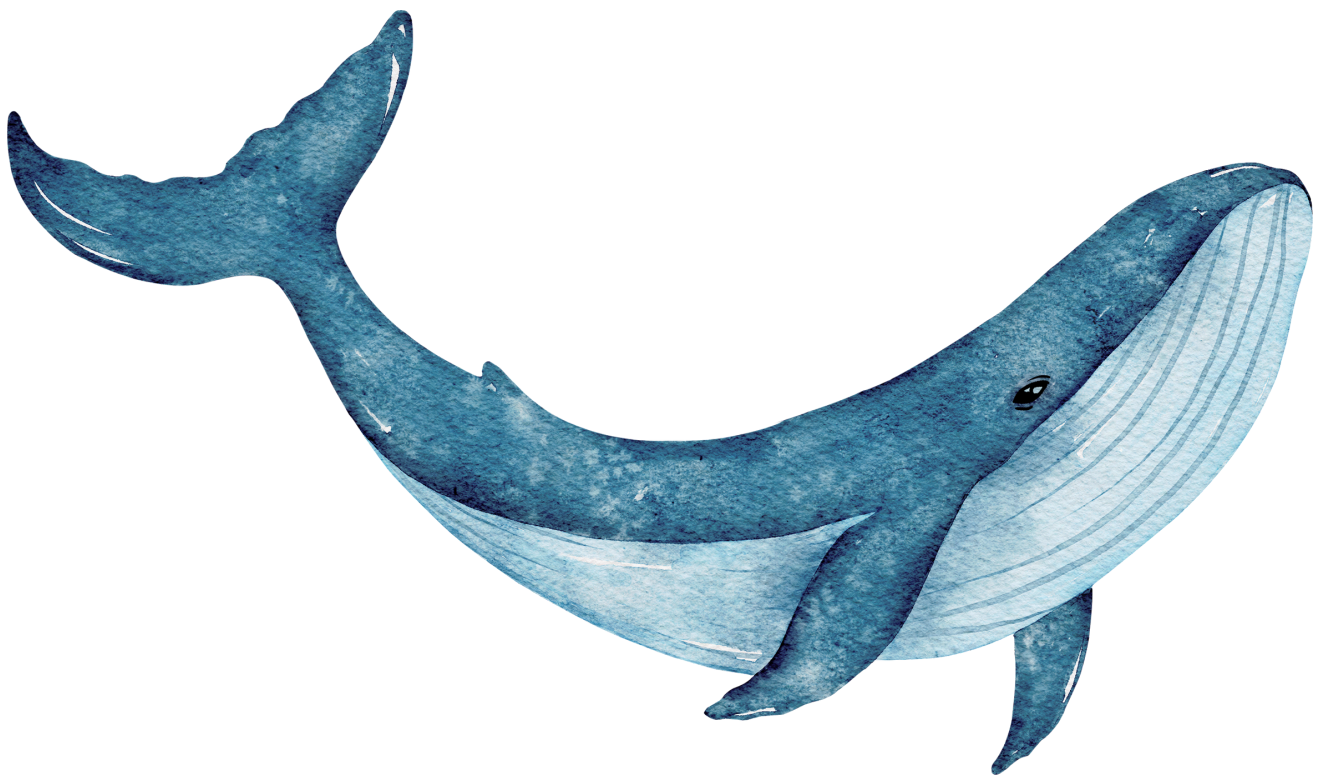
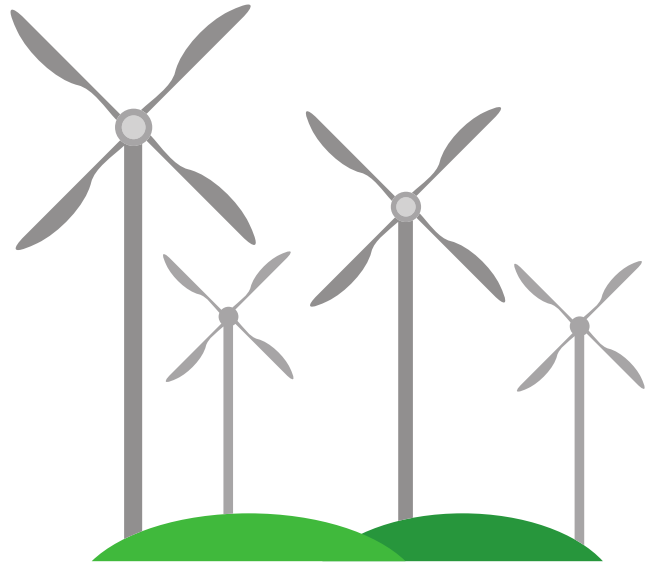


**The bumpy
blades on
these
turbines help
generate
more power.**

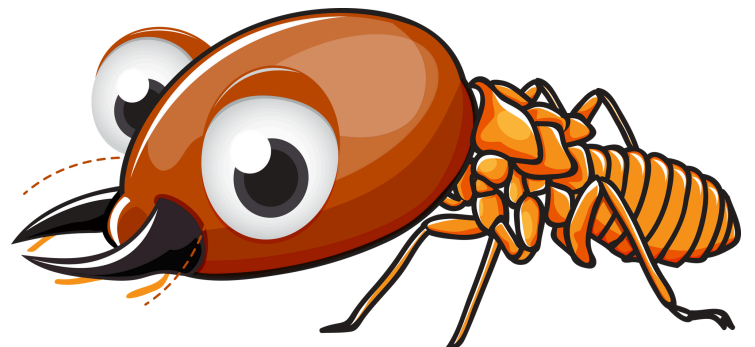


**They were inspired by the leading edge of my flipper
which is curved up and down to help water move
evenly over my flippers!**

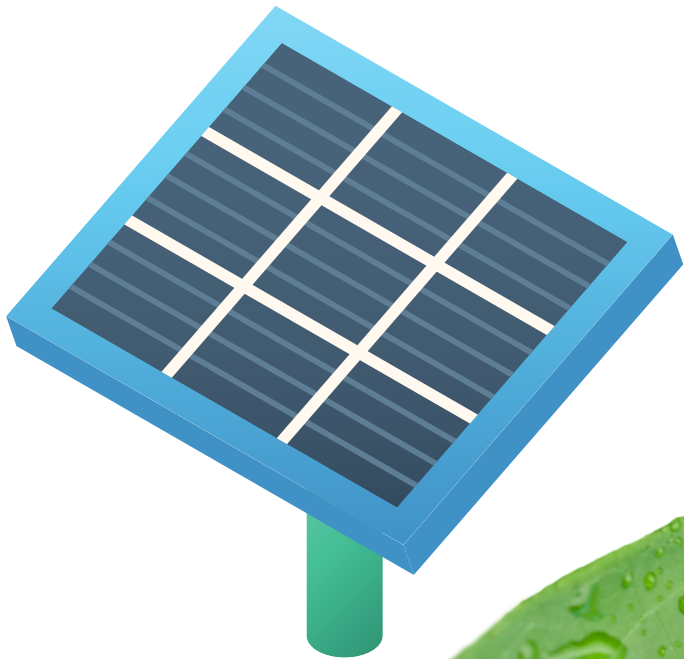
Termites live in hot savannas. They build tunnels, chimneys and vents that allow hot, stale air to rise up and escape, and cooler air to sink down.



Inspired by our mounds, humans now design buildings that cool themselves. Thanks to us you can say goodbye to energy-guzzling air conditioning!

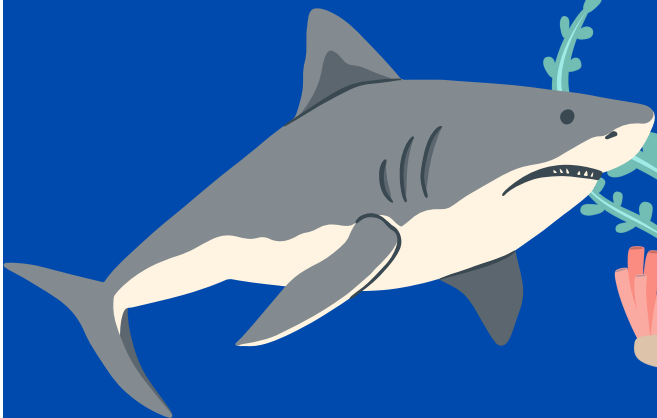


A team of scientists studying leaves discovered that a leaf's wrinkles and folds do 2 things. They soak up sunshine, and they channel light like a river channels water. The scientists mimicked this genius design to create a better solar cell!





Did you know I have inspired the invention of a special coating for ships and submarines that mimics the rough surface of my skin which stops barnacles from sticking to them? I'm not so bad afterall!



THE DUNG BEETLE

*collects fog on its shell and
funnels it to its mouth to
drink in dry environments*



inspired researchers to study how we can
pull fresh water from fog or dew

Spider Web Glass

A SPIDER'S WEB IS ONE OF THE STRONGEST DESIGNS IN NATURE.



The webbing pattern has been copied by automotive industries so that windshields crack but do not shatter.